

MicroFlex



HVLP PAINT SPRAY SYSTEM



User's Manual

Gravity MicroFlex Model MFG-3100

US Patents
4,850,809 • 4,991,776 • 5,217,564
5,044,557 • 5,053,807 • 5,393,345 • 5,609,302

Smith Eastern Corporation
10630-S Riggs Hill Road • Jessup, Maryland 20794-9425 USA
301-497-7600 • 800.937.HVLP (4857) • Fax 301.497.7613
microflex@airverter.com • www.airverter.com

Compliance • Quality • Performance • Reliability

AirVerter® Gravity MicroFlex Spray Gun

DO NOT OPERATE SPRAY GUNS WITHOUT PERSONAL SAFETY EQUIPMENT

**Please Read This Owner's Manual *BEFORE*
Using Your MicroFlex Spray Gun**

Who Should Use A MicroFlex?

The AirVerter® Gravity MicroFlex™ Spray Gun is a precision instrument. It requires meticulous care and maintenance to achieve its outstanding results.

The MicroFlex uses "micro" fittings and tiny air and fluid passages to spray small amounts of material. Consequently, the MicroFlex must be faithfully cleaned and maintained.

The MicroFlex requires extremely little fluid and air pressure and requires precise adjustment. These adjustments, while not able to be adequately described in this manual, are second nature to trained technicians.

WARRANTY

Smith Eastern Corporation warrants to the Purchaser that the AirVerter® Gravity MicroFlex™ MF-3100 Spray Gun is free from defects in material or workmanship under normal use and service for a period of twelve (12) months from the date of purchase.

Should any failure appear during this period, Smith Eastern shall, if given prompt written notice by the Purchaser, correct such nonconformity by repair or replacement of the nonconforming part, F.O.B. Smith Eastern's repair facility. Repair parts are warranted for ninety (90) days from the date of shipment, but repairs or replacements to original equipment shall not renew or extend the warranty period of such equipment.

Equipment and parts furnished by Smith Eastern but manufactured by others shall be limited to the warranty offered by the manufacturer thereof. Smith Eastern reserves the right to limit this warranty in cases of misuse or abuse. Any modifications to spray guns or recommended procedures will void the warranty.

The foregoing warranty is exclusive and in lieu of other warranties of quality or performance, expressed, implied or statutory, including any warranties of merchantability or of fitness for a particular purpose.

DO NOT OPERATE AIRVERTER® SPRAY GUNS WITHOUT USING PROPER PERSONAL SAFETY EQUIPMENT INCLUDING RESPIRATOR, GOGGLES AND SAFETY CLOTHING.

OBSERVE ALL PRECAUTIONS RELATED TO SPRAYING.

THIS EQUIPMENT IS OPERATED USING PRESSURIZED AIR. ALWAYS DISCONNECT SPRAY GUN FROM AIR AND FLUID HOSES AND DEPRESSURIZE SYSTEM PRIOR TO DISASSEMBLY OR MAINTENANCE.

EQUIPMENT REQUIREMENTS

1. Air Compressor that will hold a minimum of 20 PSI at the gun. Important: Position a pressure gauge at the end of your air hose next to the gun to be assured of the PSI required to satisfactorily spray your coating.
2. High Pressure Air Hose:
 - a. Air hose lengths up to 50 feet MUST have an I.D. of 3/8 inch.
 - b. Air hose lengths greater than 50 feet MUST have an I.D. of 1/2 inch.

START-UP

1. Attach the air source to the base of the MFG-3100 Spray Gun

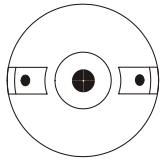
BEFORE SPRAYING

1. Before you use your paint, make certain it is properly mixed. This is particularly true of multi-component paints. Use a paint shaker, rotary mixer, or paint paddle to achieve a homogeneous mixture. We recommend splitting your paint into two parts; the top will typically be lighter and the bottom will be heavier. Completely stir the bottom half of the paint and slowly add small amounts of the top half into the heavier bottom.
2. Strain your paint to remove impurities. Use a cone strainer, or a 100-mesh nylon bag or equivalent strainer.
3. Thin your paint according to the manufacturer's specifications.
4. Needle packings (GG-024) are preset at the factory and self adjusting. Replace packing cartridge when necessary.

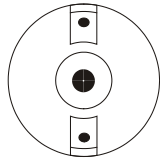
SPRAYING

1. Air pressure forces paint from the paint container into the fluid chamber of the gun and out through the nozzle where the flow of air breaks the paint stream into tiny particles (atomization), creating the spray.
 - a. Needle position controls the amount of paint flowing through the fluid nozzle.
 - b. Trigger action controls needle position.
 - c. The Fluid Control Knob (GG-015) at the rear of the spray gun controls trigger action. Turning to the right will reduce fluid flow; turning to the left increases flow.
2. Adjust the air until you have the desired atomization. Too much air or fluid pressure will cause the gun to spray improperly and will create unnecessary overspray! You need only a small amount of air as you are atomizing only a small amount of paint.
3. Align the Flexible Extension (MF-008) to the desired position.
4. If you are having problems with the operation of your paint gun, check the Trouble Shooting Guide at the end of the manual for possible causes and solutions.

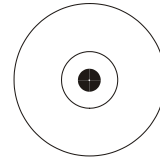
AirVerter® Gravity MicroFlex Spray Gun



**Vertical Fan Pattern
MF-202**



**Horizontal Fan Pattern
MF-202**



**Round Pattern
MF-203**



CLEANING YOUR GRAVITY MICROFLEX SPRAY GUN

Spray gun performance is directly related to how well it is cleaned after each use. This is particularly true for the small orifices in the MicroFlex.

WARNING!

Always de-pressurize system prior to any maintenance or disassembly procedure. Disconnect all air and fluid hoses prior to performing any maintenance operation.

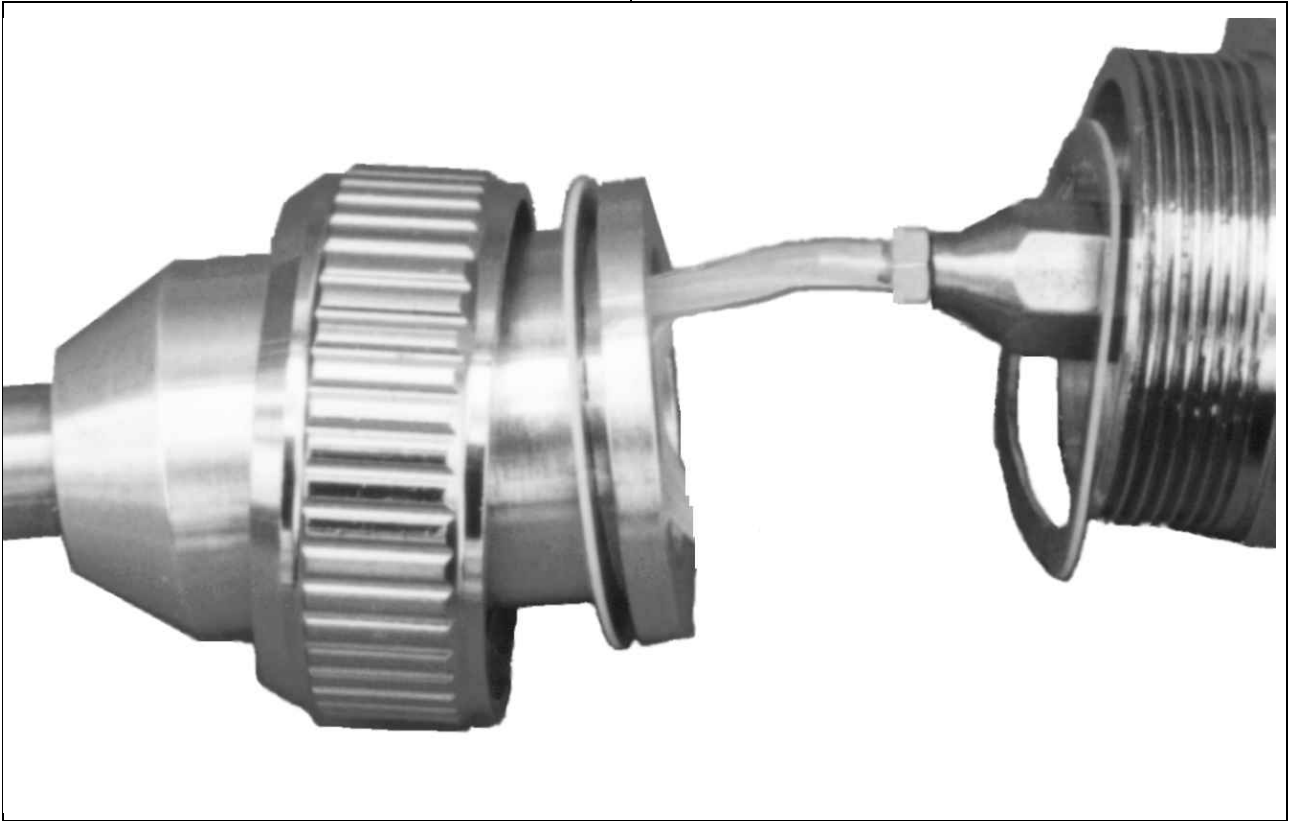
1. Run or pump solvent through the gun to completely remove paint from the fluid chamber. Flush passages thoroughly, as brushes or other devices will not reach most parts of the fluid chamber. **Note:** The Fluid Hose provided is not designed for repeated detachment and reattachment to the Hose Barb or Spray Head. If flushing with solvent cannot clear a clogged Fluid Hose, replace the Fluid Hose.
2. Wipe the Handle and Needle (GG-014) clean with solvent and a clean soft cloth. Use caution to avoid damaging or bending the needle. Re-lubricate the needle with Vaseline.
3. Unscrew the Pattern Control Ring (GG-001) from the Spray Head Assembly to separate the Adapter Collar (MFG-002) from the Spray Head Assembly exposing the Fluid Hose (MF-010).
4. With the wrench provided, remove the Needle Seat (MFG-3006) from the Spray Head Assembly. Use caution to avoid damaging or bending the Hose Barb (MF-012). Be careful not to lose the Anti-Friction Washers (MF-003).
5. Unscrew the Hose Barb from the Needle Seat. Clean the Needle Seat with brush provided.
6. Unscrew the MicroFlex Air Cap (MF-202 or MF-203) and clean with solvent ensuring all passages are absolutely clean.
7. Unscrew the MicroFlex Spray Head (MF-200) from the Flexible Extension (MF-008).
8. Clean the MicroFlex Spray Head (MF-200) with solvent ensuring all passages are clean and free of obstructions. Use caution to avoid damaging or bending the fluid nozzle tip.
9. Use the round brush supplied to clean Needle Packings (GG-024).
10. Inspect to make certain that all paint residue has been removed from the fluid chambers in the Spray Head Assembly.
11. Wipe all parts dry with a clean cloth before reassembling.

DO NOT OPERATE SPRAY GUNS WITHOUT PERSONAL SAFETY EQUIPMENT

AirVerter® Gravity MicroFlex Spray Gun

Re-Assembly

1. Screw the Spray Head into the Flexible Extension and attach the Air Cap to the Spray Head.
2. Attach the Fluid Hose and Hose Barb to the Needle Seat.
3. Remember to place the larger of the two Anti-Friction Washers between the Spray Head (xxx) and the Adapter Collar (MFG-002)
4. Reattach the Needle Seat to the Spray Head.
5. Replace the MicroFlex Adapter Collar, Rigid Extension, Flexible Extension, Anti-Friction Washers and Pattern Control Ring on the Spray Head Assembly observing that the Fluid Hose inside the Adapter Collar is not kinked.
6. Carefully align the spray head and handle and insert the needle into the Packing Nut.
7. Tighten the connector stud.



DO NOT OPERATE SPRAY GUNS WITHOUT PERSONAL SAFETY EQUIPMENT

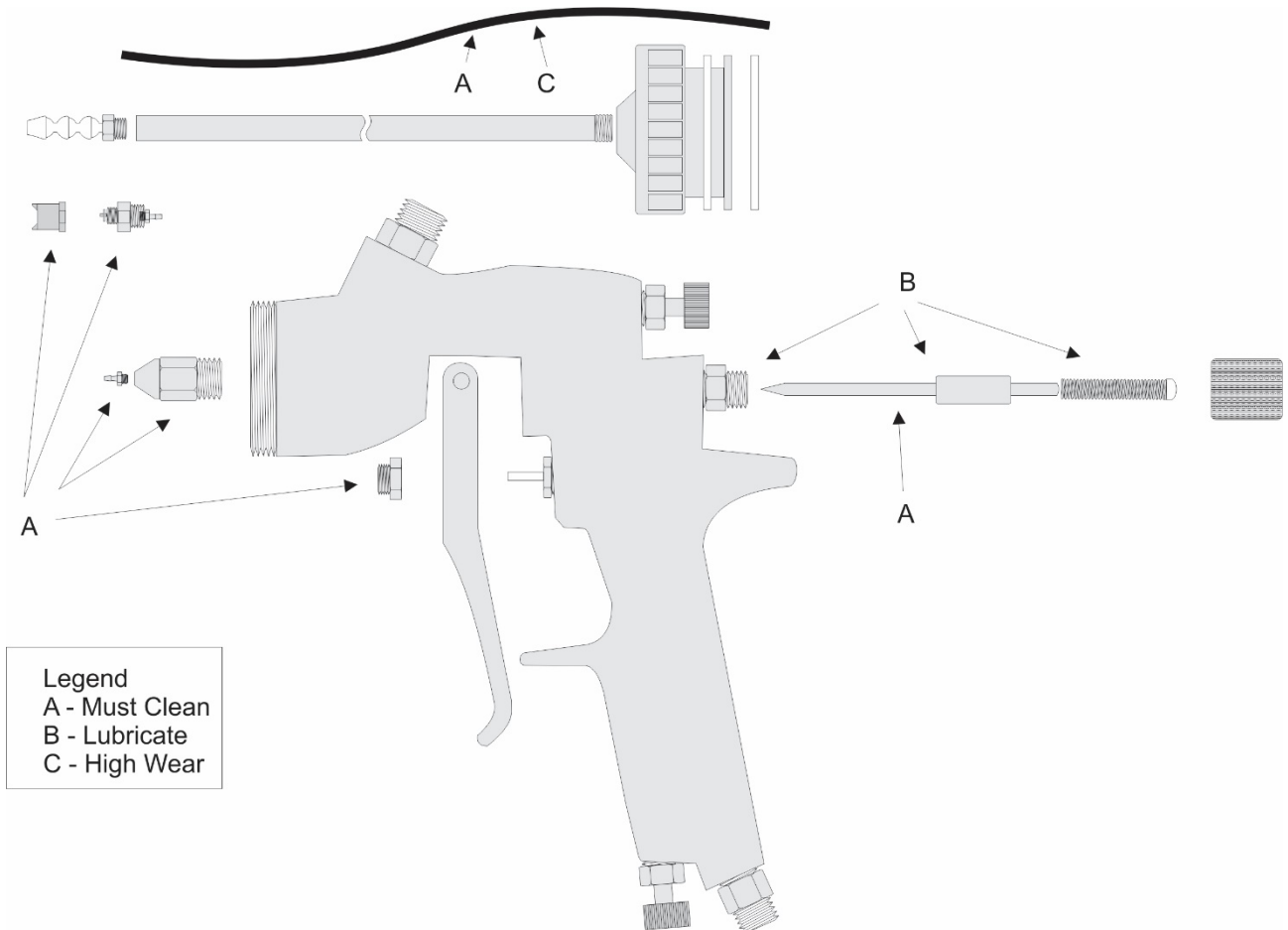
CLEANING ANCILLARY EQUIPMENT

1. Clean all paint residue from the pressure pot or pump.
2. All fluid passages must be clean and free of obstructions.
3. All gauges and valves must be clean and in proper working order.

LUBRICATION INSTRUCTIONS

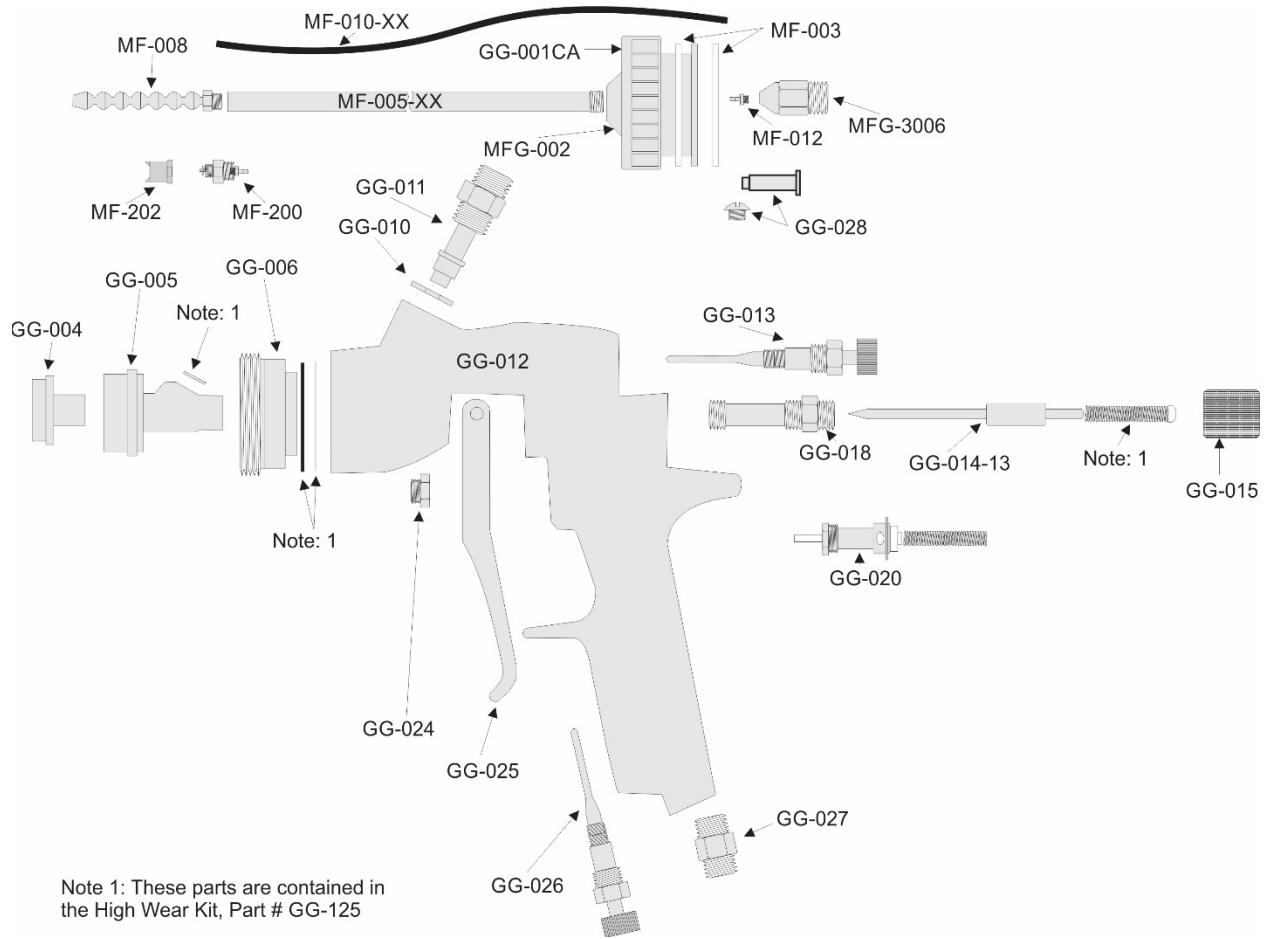
1. Use Vaseline or a non-silicone grease to lubricate the gun.
2. Lubricate all threaded connections for ease of maintenance.
3. Lubricate the needle where it passes through the needle packing.
4. DO NOT allow lubricant to get into areas where paint may come into contact with lubricant.

MICROFLEX MAINTENANCE



DO NOT OPERATE SPRAY GUNS WITHOUT PERSONAL SAFETY EQUIPMENT

AirVerter® Gravity MircoFlex Spray Gun Illustrated Parts Breakdown



MicroFlex Gravity Gun Parts List

Part #	NSN	Description
GG-002	4940-01-489-5402	Fluid Nozzle Body
GG-005	4940-01-490-1877	Nozzle Carrier
GG-006	3040-01-489-5406	Air Cap Adapter
Note 1		O-Ring
Note 1		O-Ring
Note 1		Seal
GG-010	5325-01-490-0901	Lock Nut
GG-011	4030-01-490-2068	Fluid Inlet Fitting
GG-012	4940-01-489-5399	Gun Body HVLP
GG-013	4940-01-489-6196	Fan Control Assembly
GG-014-xx		Fluid Needle
GG-015	5355-01-490-0853	Fluid Control Knob
Note 1		Spring Seat
Note 1		Needle Return Spring
GG-018	4940-01-490-2005	Rear Bushing
Note 1		Seal
GG-020	4820-01-489-1925	Air Valve Assembly
GG-021	4820-01-489-1921	Air Valve Poppet
Note 1		O-Ring
Note 1		Air Valve Spring
GG-024	4940-01-490-1897	Needle Seal Cartridge
GG-025	4940-01-489-6203	Trigger
GG-026	4940-01-490-1880	Air Control
GG-027	4730-01-490-1948	Air Inlet Fitting
GG-028	4940-01-490-1964	Trigger Pivot Set
		Allen Plug
MF-008	4940-01-457-3754	Flexible Extension
MF-008A		Adjustable Hose Beads SIX BEAD LENGTH
MF-008B		1/4 inch Round Nozzle
MF-008C		1/8 NPT Connector
MF-008D		1/4 ID 90 Degree Nozzle
MF-008T		Flexible Extension Assembly Tool
MF-010		MicroFlex fluid tube 100 foot roll
MF-010-XX		Fluid Hose
MF-012	4940-01-467-7150	Hose Barb w/5 nylon washers
MFG-002		MicroFlex Adapter Collar for GG-100 Gravity Feed Gun
MF-200	4940-01-457-3954	Spray Head Body w/Integral Hose Barb - Fixed Pattern
MF-202	4940-01-457-3301	Air Cap - Fan Pattern

TROUBLESHOOTING

Trouble	Probable Cause	Remedy
Paint Will Not Flow	<ol style="list-style-type: none"> 1. Blockage in fluid nozzle 2. Loss of air pressure in cup 3. Loose fluid nozzle 4. Paint hose loose, damaged or clogged 5. Coating is too thick 6. Loose Needle Packing 	<ol style="list-style-type: none"> 1. Clean or replace; strain paint 2. Search for air leaks and check cup gasket 3. Tighten 4. Tighten, replace or clean; strain paint 5. Thin the coating 6. Replace packing
Inconsistent Spray Pattern (Spits And Sputters)	<ol style="list-style-type: none"> 1. Running out of paint 2. Loose fluid tube 3. Loss of fluid pressure 4. Loose needle packing 5. Damaged air pressure tube 	<ol style="list-style-type: none"> 1. Fill cup or pot, but never to the top (3/4 max.) 2. Tighten 3. Search for air leaks or blockages 4. Replace packing 5. Air pressure tube requires replacing or close inspection
Leakage at Front of Gun	<ol style="list-style-type: none"> 1. Damaged fluid needle 2. Dirty fluid nozzle 3. Impurities in paint 4. Loose fluid tube 5. Fluid adjustment screwed all the way out 6. Needle not firmly seated in the spray head 7. Packing too tight 	<ol style="list-style-type: none"> 1. Replace 2. Clean 3. Strain paint 4. Tighten 5. Rotate Fluid Control Knob (DT-3012) on rear of gun clockwise 6. Check for spray head obstruction 7. Replace Packing
Distorted Spray Pattern	<ol style="list-style-type: none"> 1. Dirty or damaged spray head 2. Dirty or damaged fluid tube or needle 3. Fluid tube partially clogged 	<ol style="list-style-type: none"> 1. Clean or replace 2. Clean or replace 3. Clean

Notes

AirVerte[®]